

# BLUE WATERS

SUSTAINED PETASCALE COMPUTING

12/13/14

## Blue Waters User Monthly Teleconference



GREAT LAKES CONSORTIUM  
FOR PETASCALE COMPUTATION

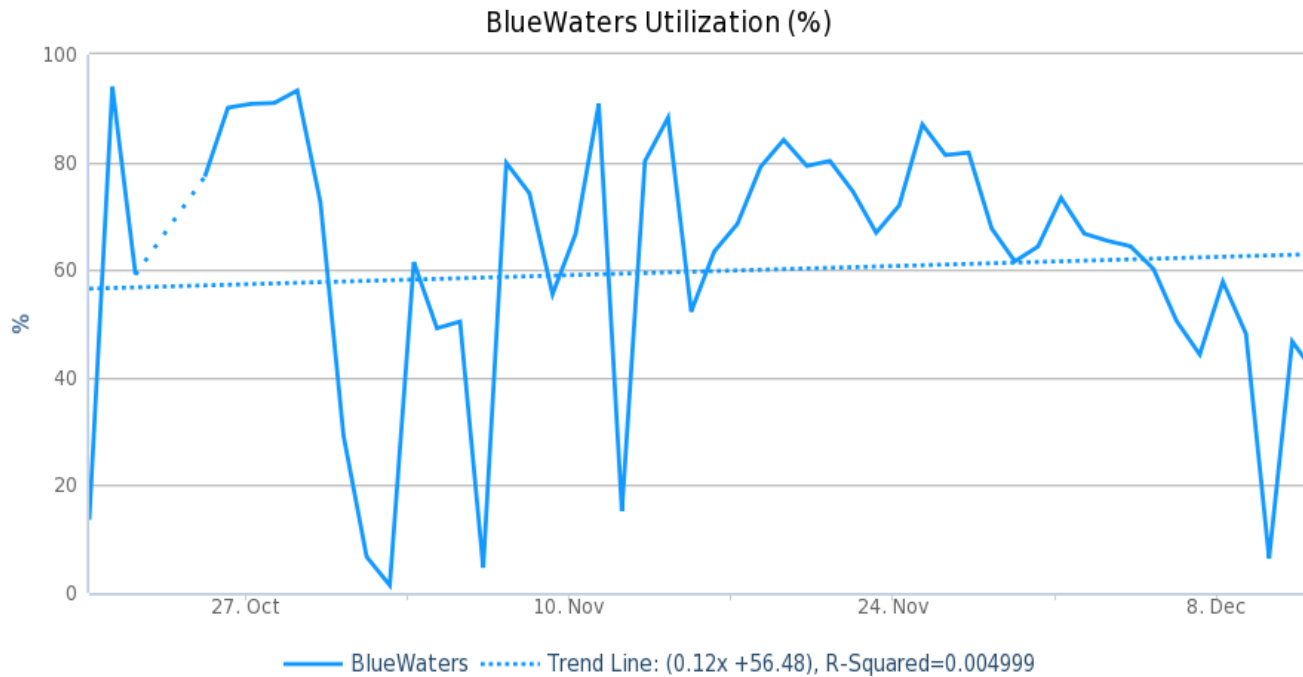
CRAY®

# Agenda

- Utilization and recent events
  - Recent and upcoming changes
  - [Blue Waters Data Sharing](#)
  - [2015 Blue Waters Symposium](#)
  - [NSF Ebola CFP](#)
  - Reduced charging opportunities
- 1:15 PM Topology Aware Scheduling webinar
- 1:45 PM [CADENS](#) with Donna Cox

# System Utilization

- Utilization since last BW User Call (October 20)



2014-10-20 to 2014-12-12 Src: HPCDB. Powered by XDMoD/Highcharts

## Recent Issues

- NVIDIA cuBLAS DGEMM – Resolved and Closed

## Upcoming Changes

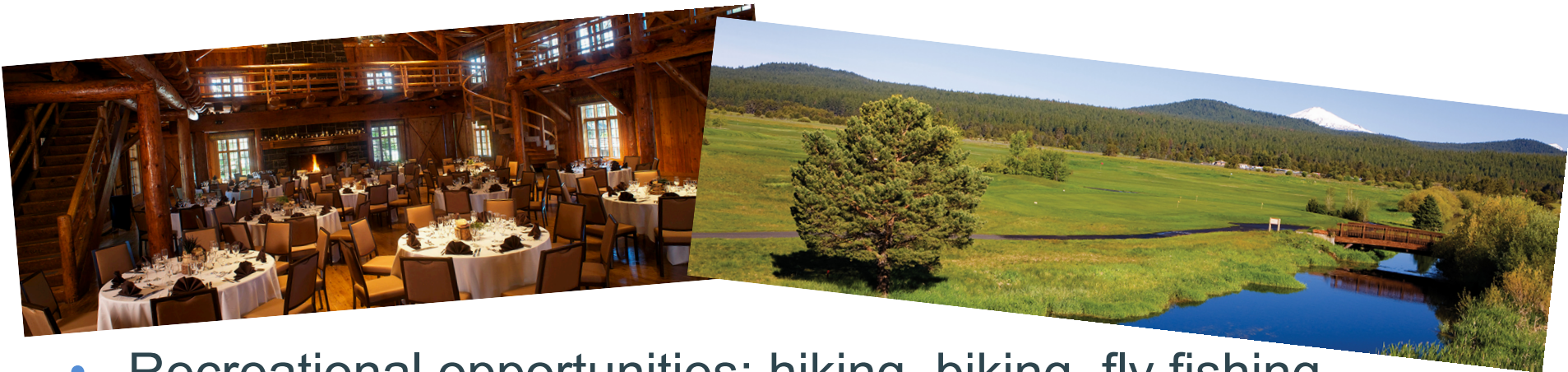
- Enable Topology Aware Scheduling at first opportunity in January.
- System upgrades
  - CLE 5.2 – January
    - Move to newer Lustre software.
  - CUDA 6.5 – January
- Enabling darshan IO library in user environment at CLE 5.2 upgrade in January.
- Modules
  - Cleaning out unused modules, old modules.

## Blue Waters Data Sharing Service

- Prototype service for data sharing.
- <https://bluewaters.ncsa.illinois.edu/data-sharing>
- Sharing of data sets from on-line or Nearline / projects/sciteam/xyz/share using Globus Online or web services (http).
- Metadata includes contact information, description, website, size and count, DOI\*.

## 2015 Blue Waters Symposium

- May 10-14, 2015
- PI meeting for NSF PRAC teams.
- Sunriver Resort in Sunriver, OR



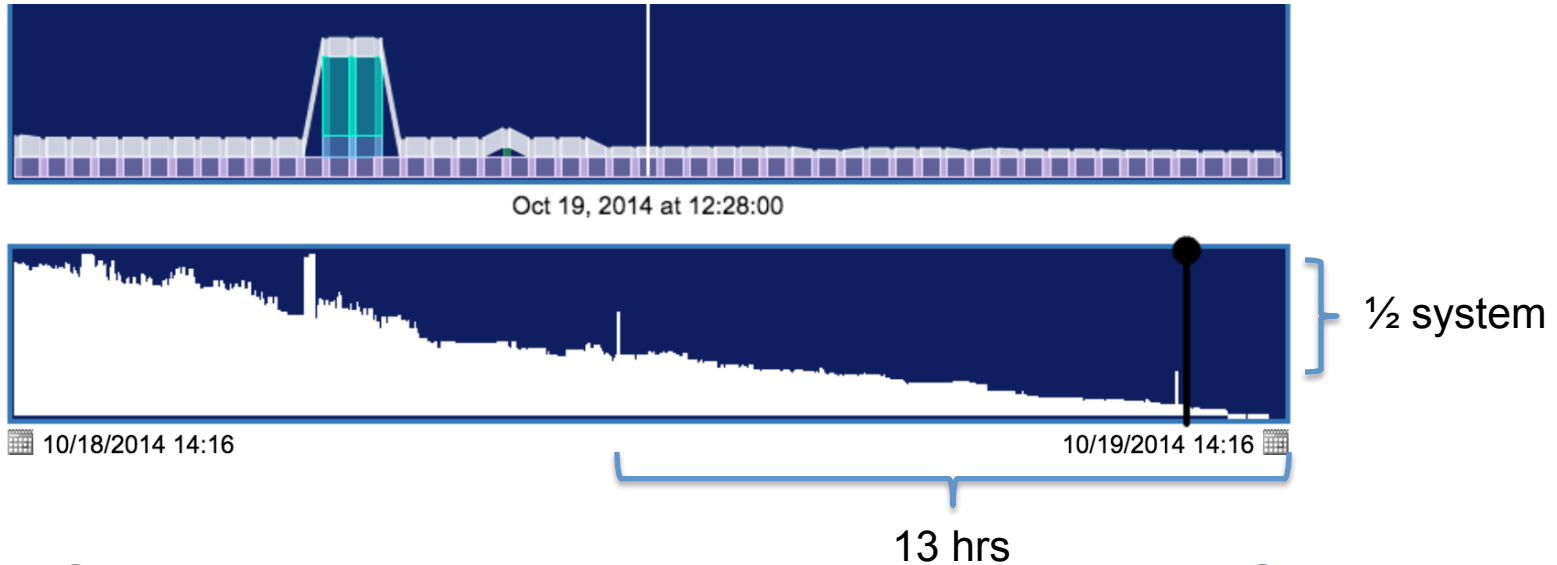
- Recreational opportunities: hiking, biking, fly fishing, rafting, canoeing, rock climbing, ...

## Discount Charge Period

- The Blue Waters project office is pleased to announce a reduced charging period in time for the holidays as a Thank You for your help in a successful NSF Review that took place December 3rd-4th.
- Starting Wednesday, December 17th and continuing to January 5th 2015.
- Discount on charging will be a 50% reduction across all XE jobs and an additional 25% off jobs greater than 4,096 XE nodes.




## Reminder to backfill ...



- Watch for maintenance notices or draining for large jobs.
- Implementing a charge factor for backfilling.
- Realtime chart of backfill opportunities

<https://bluewaters.ncsa.illinois.edu/why-isn-t-my-job-running#backfill>

## Request for Science Successes

- We need to be current on products that result from time on Blue Waters such as:
  - Publications, Preprints (e.g. [arXiv.org](https://arxiv.org) ), Presentations.
  - Very interested in data product sharing.
- Appreciate updates sooner than annual reports.
  - Send to [gbauer@illinois.edu](mailto:gbauer@illinois.edu)
- NSF PRAC teams send information to PoCs.
- See the [Share Results](#) section of the portal as well.
- Be sure to include [proper acknowledgment](#)
  - Blue Waters - National Science Foundation (ACI 1238993)
  - NSF PRAC – OCI award number

## Special Topics

- Topology Aware Scheduling – Robert Brunner.
- CADEN – Donna Cox.

## Future Topics?

- Please send us your suggestions on topics for future teleconferences / webinars